

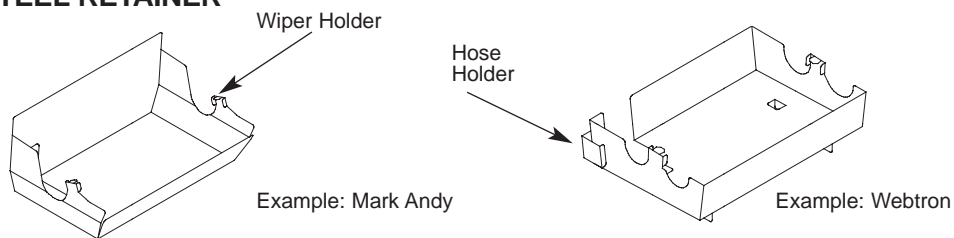
INSTRUCTIONS

C2000 system

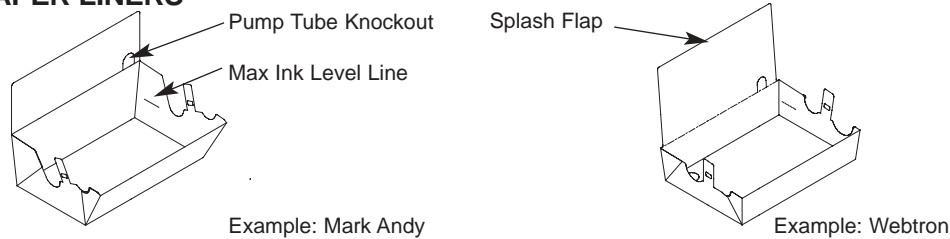
The DIP Company appreciates having this opportunity to save you time and money in your printing operation. Follow the steps below to set up and use your new “*Quick Change*” ink fountain. Please note that the DIP Company makes “*Quick Change*” systems for many different flexo presses, so your starter kit may not look exactly as shown below, but is used in the same way.

COMPONENTS

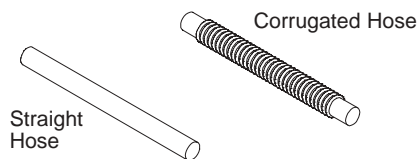
STEEL RETAINER



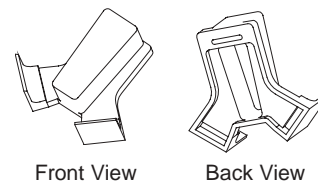
PAPER LINERS



DRAIN HOSE



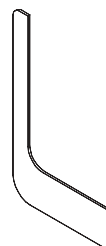
C2000 WIPER



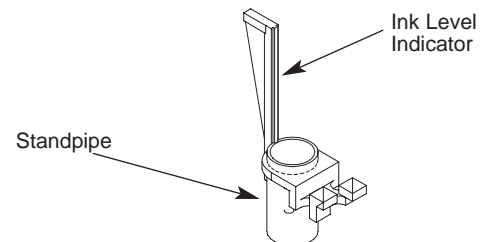
RUBBER STOPPER



STIR STICK

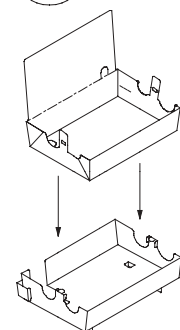


STANDPIPE WITH OPTIONAL INK LEVEL INDICATOR



Assembly Instructions:

1. If your paper liner has a drain: support the drain on the inside of the liner with one hand and push the drain hose onto the drain.
2. Place the paper liner into the steel retainer as shown at right. The lift tabs on the liner will fit into the wiper holder.



CORPORATE
OFFICE
10740 Lyndale
Avenue South,
Bloomington,
MN 55420

Phone
952-888-5991

Fax
952-888-6467

www.
dipworldwide.com

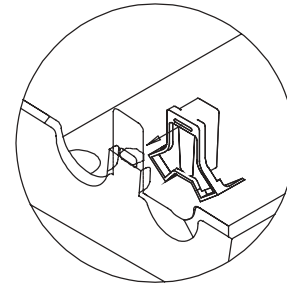
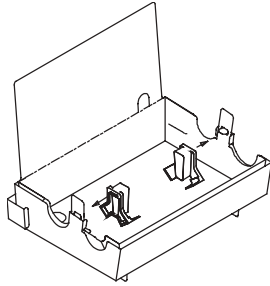
WESTERN
OFFICE
1173 3800 Lane
Paonia,
CO 81428

Phone
970-527-7879

Fax
970-527-7878



3. Loop the hose into the hose holder – this could be located either on the steel retainer or the paper liner, depending on the model.
4. Push the C2000 wiper onto the wiper holder, over the liner lift tabs. The slot on the back of the wiper will fit over the top tab on the wiper holder. See diagram below.



Attach Wiper to Wiper Holder or Retainer

5. [Optional] Place the standpipe into the drain – this will set maximum ink levels and help prevent overfilling. Or, plug the drain with a rubber stopper so the drain hose does not hold extra ink during the press run.
6. Place the whole assembly into the press the same way you would the ink fountain.



TIPS:

- Most liners have an embossed line on the inboard side to use as an ink level indicator. Fill ink to approximately 1/8" **below** this line to avoid overflows.
- Some liners have splash flaps on the back – this catches ink spray when running at high speeds. The flap can also serve as an ink cover when tucked under a doctor blade.
- Some liners have a “knockout” on the inboard side – this is for those operators that pump ink. The pump hose can be fed through the knockout.
- Knockouts on the outboard side of liners are hose holders. Bend the “U” shape out and pull the hose up through to hold in place.
- The optional ink level indicator serves as a visual reference for ink levels. It can also be used as a handle to pull the standpipe out to drain the ink.
- Liners provided with a retainer will NOT fit into the manufacturer’s fountain, unless your sales person has specified otherwise.
- The C2000 wiper will ONLY fit into a DIP retainer designed for it, not into the press manufacturer’s fountain.

CLEANUP:

1. When finished with a run, drain the ink out of the liner.
2. Replug the liner, or rehang the hose.
3. Clean the majority of the ink from the rollers and journals. The liner will catch your washup fluids.
4. Remove the retainer/liner from the press. Discard the liner with wiper and hose. (NOTE – it will cost you more time and money to clean the dirty hose than to use a new hose on the next run.)



*Thank you for trying the DIP “Quick Change” ink system.
Please call your sales person or customer service if you have any questions.*