

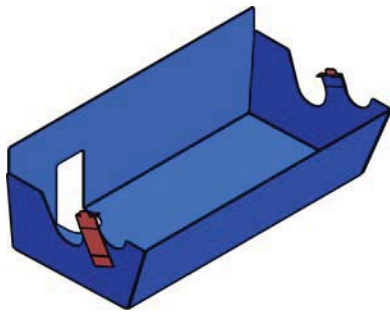
INSTRUCTIONS

Spring Loaded Wiper

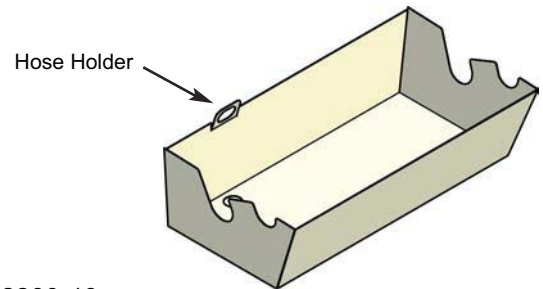
DIP Company appreciates having this opportunity to save you time and money in your printing operation. Follow the steps below to set up and use your new "Quick Change" ink fountain. Please note DIP Company makes "Quick Change" systems for many different flexo presses, so your starter kit may not look exactly as shown below, but is used in the same way.

COMPONENTS

STEEL RETAINER

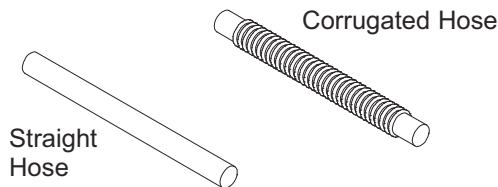


PAPER LINER

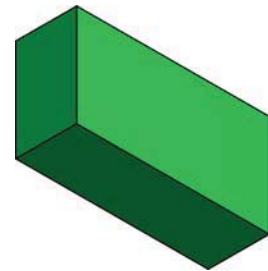


Example: Mark Andy 2200-13

DRAIN HOSE



WIPER

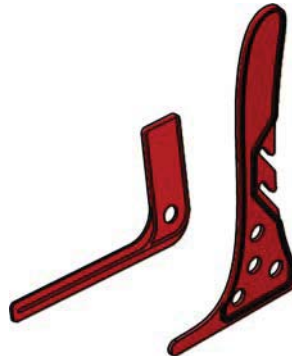


Example: MAW-002

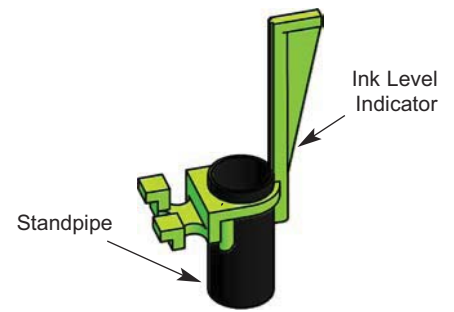
RUBBER STOPPER



INK SPATULA STIR STICK



STANDPIPE WITH OPTIONAL INK LEVEL INDICATOR

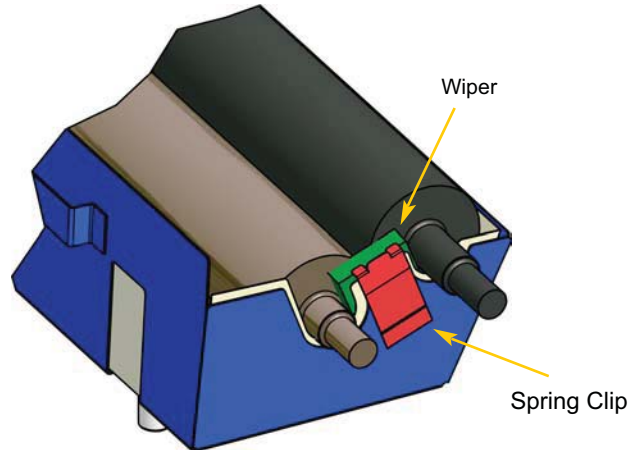
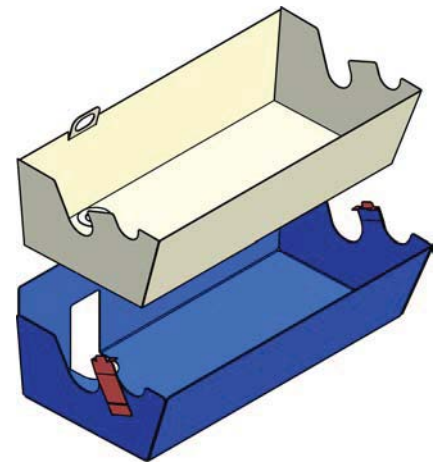


CORPORATE
OFFICE
10740 Lyndale
Avenue
Bloomington,
MN 55420
Phone
952-888-5991
Fax
952-888-6467
www.
dipworldwide.com



Assembly Instructions

1. If your paper liner has a drain: support the drain on the inside of the liner with one hand and push the drain hose onto the drain.
2. Place the paper liner into the steel retainer as shown on right.
3. Loop the hose into the hose holder- this could be located either on the steel retainer or the paper liner depending on the model.
4. [Optional] Place the standpipe into the drain - this will set maximum ink levels and help prevent overflowing. Or plug the drain with a rubber stopper so the drain hose does not fill with ink.
5. Place the whole assembly into the press the same way you would the OEM ink fountain.
6. Pull back the spring clip, place the wiper between the liner and anilox and metering rolls and release clip.



TIPS:

- If there are two score lines, the bottom line represents the initial ink fill line. The top score line is there as a reference point and the ink should never be filled to this point or overflow will occur. The top score line is 1/8" **below** the lowest point of the metering roller journal cutout.
- Some liners have splash flaps on the back. This catches ink spray when running at high speeds. The flap can also serve as an ink cover when tucked under a doctor blade.
- Some liners have a “knockout” on the inboard side – this is for those operators that pump ink. The pump hose can be fed through the knockout.
- The knockouts on the outboard side of liners are hose holders. Bend the “U” shape out and pull the hose up through to hold in place.
- The optional ink level indicator (ILI) serves as a visual reference for ink levels. It can also be used as a handle to pull the standpipe out to drain the ink.
- Liners provided with a retainer will NOT fit into the manufacturer’s fountain, unless your sales person has specified otherwise.

CLEANUP:

1. When finished with a run, drain the ink out of the liner.
2. Replug the liner, or rehang the hose.
3. Clean the majority of the ink from the rollers and journals. The liner will catch your wash up fluids.
4. Remove the retainer/liner from the press. Discard the liner with wiper and hose. (NOTE – it will cost you more time and money to clean the dirty hose than to use a new hose on the next run.)



*Thank you for trying DIP Company “Quick Change” liner systems.
Please call your sales person or customer service if you have any questions*