

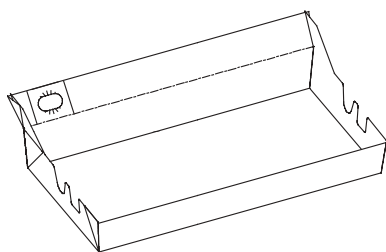
INSTRUCTIONS

Liners for Manufacturer's Fountain

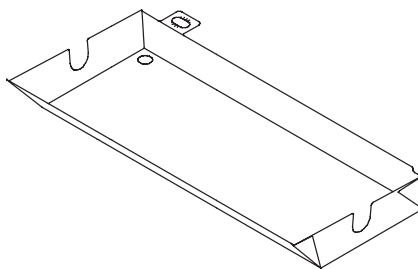
The DIP Company appreciates having this opportunity to save you time and money in your printing operation. Follow the steps below to set up and use your new "Quick Change" ink fountain liner. Please note that the DIP Company makes "Quick Change" systems for many different flexo presses, so your liner may not look exactly as shown below, but is used in the same way.

COMPONENTS

FOUNTAIN LINER:

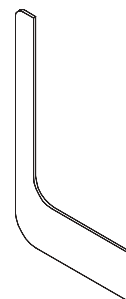


Example: Arsoma



Example: Comco

STIR STICK



CORPORATE
OFFICE
10740 Lyndale
Avenue South,
Bloomington,
MN 55420

Phone
952-888-5991

Fax
952-888-6467

www.
dipworldwide.com

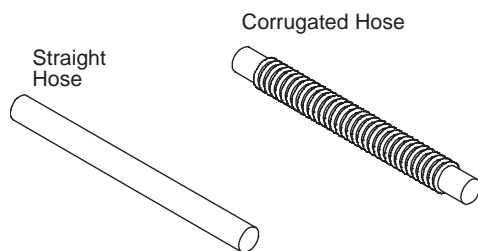
WESTERN OFFICE
1173 3800 Lane
Paonia,
CO 81428

Phone
970-527-7879

Fax
970-527-7878

If your liner has a drain, your sample kit may contain the following components:

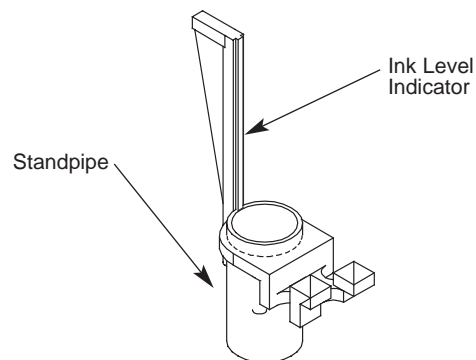
HOSE



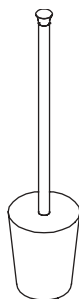
Straight
Hose

Corrugated Hose

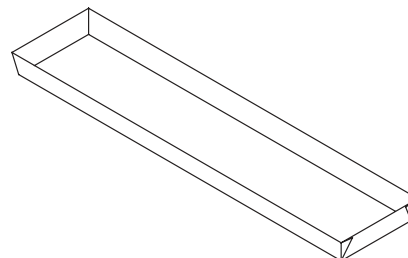
STANDPIPE WITH INK LEVEL INDICATOR



RUBBER STOPPER



DRIP TRAY



This “Quick Change” Liner will fit into your existing ink fountain.

1. If the liner has a drain, you may have to attach the hose before putting the liner in the pan, depending on your pan configuration. When attaching the hose, support the drain on the inside of the liner with one hand and push the hose onto the drain.
2. Place the paper liner into the fountain.
3. [Optional] Place the standpipe into the drain – this will set maximum ink levels and help prevent overfilling. Or, plug the drain with a rubber stopper so the drain hose does not hold extra ink during the press run.

TIPS:

- Most liners have an embossed line on the inboard side to use as an ink level indicator. Fill ink to approximately 1/8" *below* this line to avoid overflows.
- Some liners have splash flaps on the back. This catches ink spray when running at high speeds. The flap can also serve as an ink cover when tucked under a doctor blade.
- Some liners have a “knockout” on the inboard side – this is for those operators that pump ink. The pump hose can be fed through the knockout.
- Knockouts on the outboard side of liners are hose holders. Bend the “U” shape out and pull the hose up through to hold in place.
- The optional ink level indicator serves as a visual reference for ink levels. It can also be used as a handle to pull the standpipe out to drain the ink.
- The DIP Company has over 40 drip tray configurations available, both for under-fountain placement and for use on the floor. Please call your sales person if you have need of a different size.

CLEANUP:

1. When finished with a run, drain the ink out of the liner.
2. If your liner has a drain, replug the liner, or rehang the hose.
3. Clean the majority of the ink from the rollers and journals. The liner will catch your washup fluids.
4. Remove the fountain/liner from the press. Discard the liner with hose. (NOTE – it will cost you more time and money to clean the dirty hose than to use a new hose on the next run.)

*Thank you for trying the DIP “Quick Change” ink system.
Please call your sales person or customer service if you have any questions.*

