

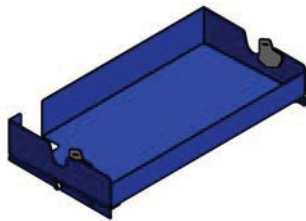
INSTRUCTIONS

C2000 Detachable Wiper Holder

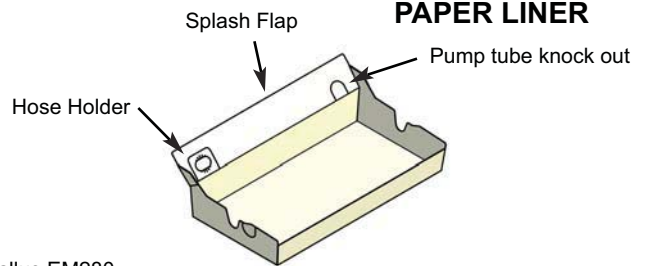
DIP Company appreciates having this opportunity to save you time and money in your printing operation. Your new C2000 "Quick Change" system uses detachable wiper holders. This design is used to allow better ink movement in the pan. Follow the steps below to set up and use your new "Quick Change" ink fountain. Please note that DIP Company makes "Quick Change" systems for many different flexo presses, so your starter kit may look different, but is used in the same way.

COMPONENTS

STEEL RETAINER

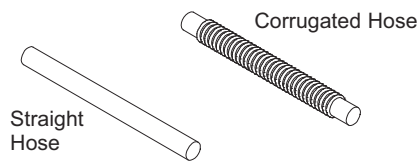


PAPER LINER

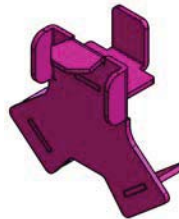


Example: Gallus EM280

HOSES



C2000 WIPER HOLDER



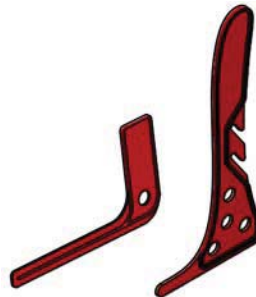
C2000 WIPER



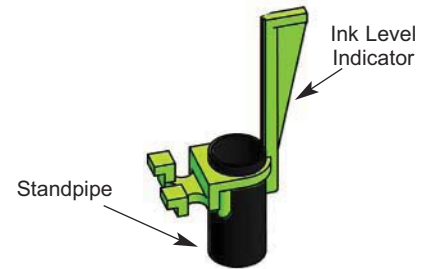
RUBBER STOPPER



INK SPATULA STIRSTICK



STANDPIPE WITH OPTIONAL INK LEVEL INDICATOR



CORPORATE
OFFICE
10740 Lyndale
Avenue
Bloomington,
MN 55420
Phone
952-888-5991
Fax
952-888-6467
www.
dipworldwide.com

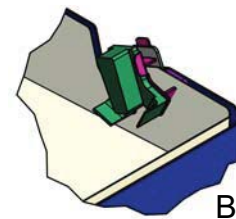
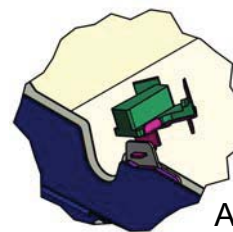
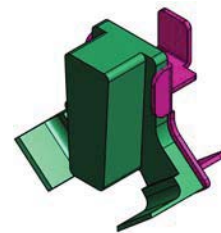
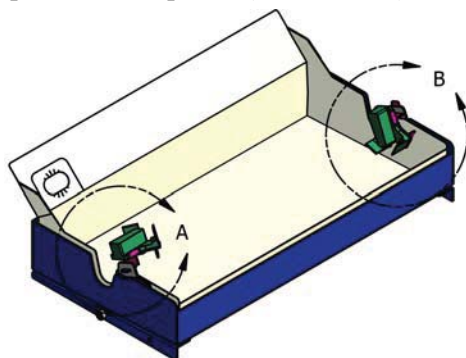
Assembly Instructions

1. If your liner has a drain: support the drain on the inside of the liner with one hand and push the drain hose onto the drain.
2. Place the paper liner into the steel retainer.



Assembly Instructions

3. Attach C2000 wiper to the detachable wiper holder. (See Right)
4. Attach wiper holder to retainer by sliding the tab on the wiper holder into the slot on the metal retainer and rotating the wiper holder in place. (See A and B)



5. Loop the hose into the hose holder- this could be located either on the steel retainer or the paper liner depending on the model.
6. [Optional] Place the standpipe into the drain - this will set maximum ink levels and help prevent overfilling. Or plug the drain with a rubber stopper so the drain hose does not fill with ink.
7. Place the whole assembly into the press the same way you would the OEM ink fountain.

TIPS:

- If there are two score lines, the bottom line represents the initial ink fill line. The top score line is there as a reference point and the ink should never be filled to this point or overflow will occur. The top score line is 1/8" **below** the lowest point of the metering roller journal cutout.
- Some liners have splash flaps on the back. This catches ink spray when running at high speeds. The flap can also serve as an ink cover when tucked under a doctor blade.
- Some liners have a “knockout” on the inboard side – this is for those operators that pump ink. The pump hose can be fed through the knockout.
- The knockouts on the outboard side of liners are hose holders. Bend the “U” shape out and pull the hose up through to hold in place.
- The optional ink level indicator (ILI) serves as a visual reference for ink levels. It can also be used as a handle to pull the standpipe out to drain the ink.
- Liners provided with a retainer will NOT fit into the manufacturer’s fountain, unless your sales person has specified otherwise.
- The C2000 wiper will only fit into a DIP retainer designed for it, not the press manufacturer’s fountain.

CLEANUP:

1. When finished with a run, drain the ink out of the liner.
2. Replug the liner, or rehang the hose.
3. Clean the majority of the ink from the rollers and journals. The liner will catch your wash up fluids.
4. Remove the retainer/liner from the press. Discard the liner with wiper and hose. (NOTE – it will cost you more time and money to clean the dirty hose than to use a new hose on the next run.)



*Thank you for trying DIP Company “Quick Change” liner systems.
Please call your sales person or customer service if you have any questions*